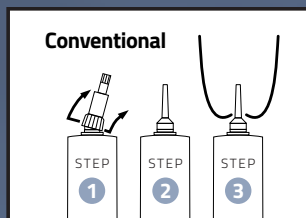


# Solveal™ . . . BLU

A non-antibiotic product indicated for closing the teat canal by forming a physical barrier in cows at drying off.

- Solveal BLÜ is a sterile, antibiotic-free, smooth blue paste.
- It is presented in ready-to-use syringes containing 4 g of intramammary infusion composed of 65% bismuth subnitrate in a mineral oil vehicle.
- Solveal BLÜ aids in preventing bacteria from entering the teat canal during the dry period, resulting in a reduced incidence of mastitis.
- Solveal BLÜ is recommended as part of a herd approach to dry cow management and mastitis control.



## ADMINISTRATION

- 1 Remove the protective cap.
- 2 Insert the syringe tip fully into the teat canal.
- 3 Insert the entire contents of the syringe into the teat canal.



**solvat**  
Innovation by Request

SolveSeal™  
**BLÜ**

**HAVE A CHANCE  
TO WIN AN**

 **WATCH**

**SERIES 9\***



**EVERY PAIL IS A WINNER -  
GET A SOLVESEAL BLÜ HAT!\*\***

Contact us at 1-877-456-2755, or [marketing@solvet.ca](mailto:marketing@solvet.ca)

\*The Apple Watch Series 9 features a 41 mm aluminium case (choice of Red, Starlight, Silver, Light Pink, Midnight) with GPS and a rubber strap for a total value of CAD\$549 (plus taxes). Subject to availability on [Apple.com/ca](https://apple.com/ca) at time of redemption. Unique code will need to be validated. Only one winner per unique code. Three (3) Apple Watch Series 9 to be won. Non-transferable, non-redeemable for cash. Solvet has no responsibility for the prize once awarded.

\*\*Each pail will contain one BLU hat from a total of 775 hats given away. Until supplies last.



[solvet.ca](https://solvet.ca)

**solvet**  
Innovation by Request